

# Test Report

**Applicant:** GuangZhou STS Lighting Equipment Co., Ltd.  
No.251 Tingshi North Road Chaoyang Shijing Town  
Baiyun District Guangzhou China

**Report on the submitted sample(s) said to be:**

**Sample Name:** COB PAR WASH

**Model:** C PAR 150TZ, C PAR 100W, C PAR 100CW, C PAR 100T, C PAR 1004/5/6, C  
PAR 150W, C PAR 150CW, C PAR 150T, C PAR 200W, C PAR 100UV

**Trade Mark:** STSLITE

**Date of Test:** Sept. 10, 2018- Sept. 17, 2018

**Date of Report:** Sept. 17, 2018

**Test Requested:** Base upon the performed tests by submitted sample, the test results comply with the limits as set by Directive (EU) 2015/863 - Amendment of EU RoHS Directive (EU) 2017/2102 (RoHS 2.0) Annex II.

**Test Method:** Please refer to the following page(s).

**Test Result(s):** Please refer to the following page(s).

**Checked By:**



( Eric Zhang )

**Approved By:**



( Coco Tang )

## Test Method:

(1) With reference to IEC 62321:2008

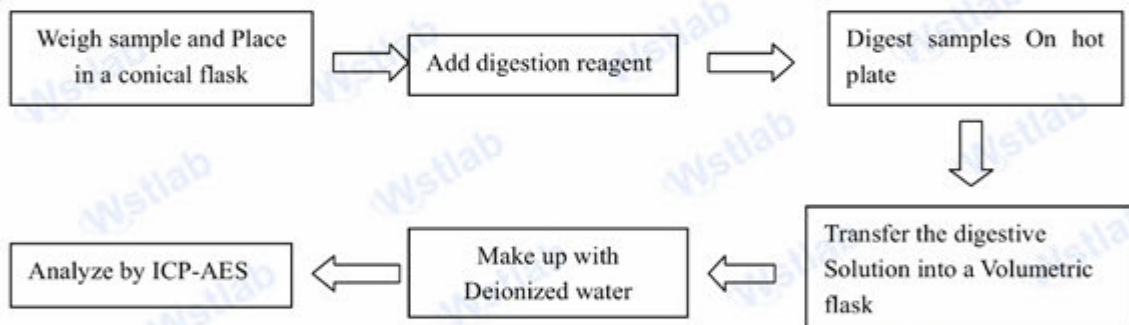
Testing item	Pretreatment method	Measuring instrument	MDL
Lead(Pb)	IEC 62321-5: 2013	ICP-OES	2 mg/kg
Cadmium(Cd)	IEC 62321-5: 2013	ICP-OES	2 mg/kg
Mercury(Hg)	IEC 62321-4: 2013	ICP-OES	2 mg/kg
Chromium(Cr VI)	IEC 62321:2008	UV-VIS	2 mg/kg
PBBs/ PBDEs	IEC 62321-6:2015	GC-MS	5 mg/kg

(2) With reference to EN 14372:2004

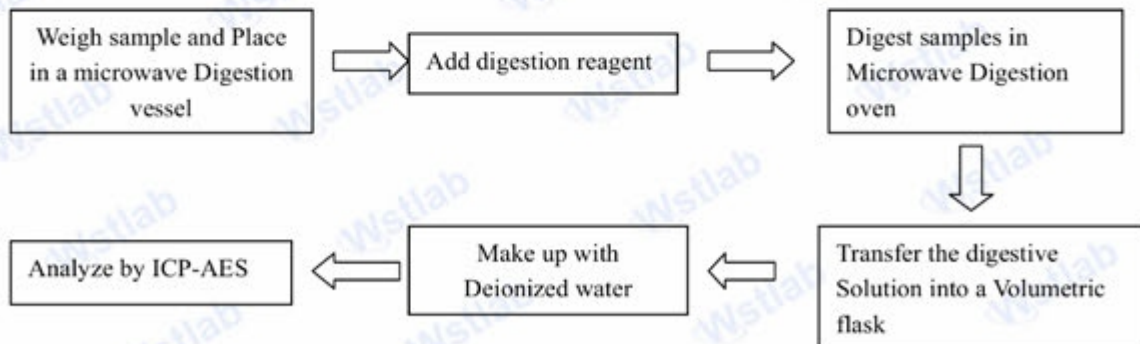
Testing item	Pretreatment method	Measuring instrument	MDL
DEHP, DBP, BBP, DIBP	EN 14372:2004	GC-MS	0.003 mg/kg

## Test Process:

## 1. Test for Cd/Pb Content

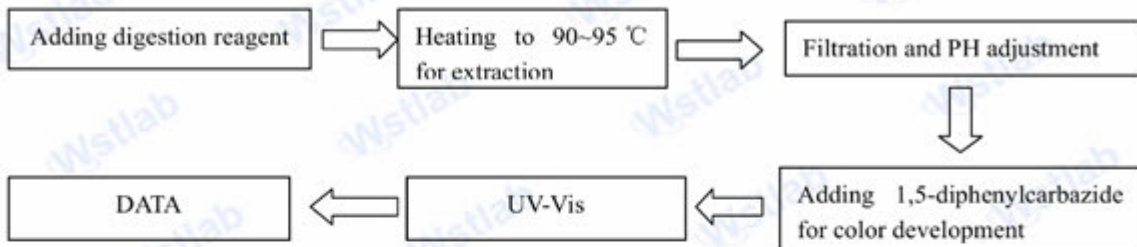


## 2. Test for Hg Content

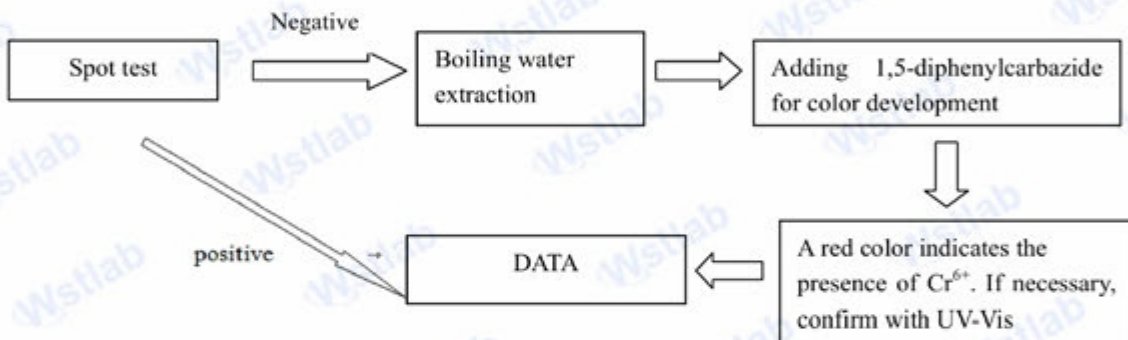


## 3. Test for Chromium(VI) Content

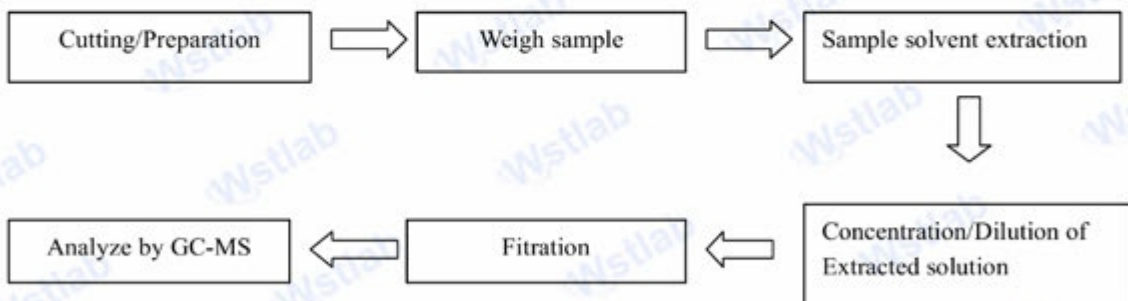
Nonmetallic material



Metallic material



## 4. Test for DBP, BBP, DEHP, DIHP, DIBP, PBB, PBDE Content





## Test Results:

Testing Item	Unit	ROHS Limit	Result					
			1	2	3	4	5	6
Lead(Pb)	mg/kg	1000	N.D.	N.D.	N.D.	N.D.	N.D.	N.D.
Cadmium(Cd)	mg/kg	100	N.D.	N.D.	N.D.	N.D.	N.D.	N.D.
Mercury(Hg)	mg/kg	1000	N.D.	N.D.	N.D.	N.D.	N.D.	N.D.
Chromium(Cr VI)	mg/kg	1000	N.D.	N.D.	N.D.	N.D.	N.D.	N.D.
Sum of PBBs	mg/kg	1000	/	N.D.	N.D.	N.D.	/	/
Monobromobiphenyl	mg/kg	-	/	N.D.	N.D.	N.D.	/	/
Dibromobiphenyl	mg/kg	-	/	N.D.	N.D.	N.D.	/	/
Tribromobiphenyl	mg/kg	-	/	N.D.	N.D.	N.D.	/	/
Tetrabromobiphenyl	mg/kg	-	/	N.D.	N.D.	N.D.	/	/
Pentabromobiphenyl	mg/kg	-	/	N.D.	N.D.	N.D.	/	/
Hexabromobiphenyl	mg/kg	-	/	N.D.	N.D.	N.D.	/	/
Heptabromobiphenyl	mg/kg	-	/	N.D.	N.D.	N.D.	/	/
Octabromobiphenyl	mg/kg	-	/	N.D.	N.D.	N.D.	/	/
Nonabromobiphenyl	mg/kg	-	/	N.D.	N.D.	N.D.	/	/
Decabromobiphenyl	mg/kg	-	/	N.D.	N.D.	N.D.	/	/
Sum of PBDEs	mg/kg	1000	/	N.D.	N.D.	N.D.	/	/
Monobromodiphenyl ether	mg/kg	-	/	N.D.	N.D.	N.D.	/	/
Dibromodiphenyl ether	mg/kg	-	/	N.D.	N.D.	N.D.	/	/
Tribromodiphenyl ether	mg/kg	-	/	N.D.	N.D.	N.D.	/	/
Tetrabromodiphenyl ether	mg/kg	-	/	N.D.	N.D.	N.D.	/	/
Pentabromodiphenyl ether	mg/kg	-	/	N.D.	N.D.	N.D.	/	/
Hexabromodiphenyl ether	mg/kg	-	/	N.D.	N.D.	N.D.	/	/
Heptabromodiphenyl ether	mg/kg	-	/	N.D.	N.D.	N.D.	/	/
Octabromodiphenyl ether	mg/kg	-	/	N.D.	N.D.	N.D.	/	/
Nonabromodiphenyl ether	mg/kg	-	/	N.D.	N.D.	N.D.	/	/
Decabromodiphenyl ether	mg/kg	-	/	N.D.	N.D.	N.D.	/	/
Diisobutyl phthalate (DIBP)	mg/kg	1000	/	N.D.	N.D.	N.D.	/	/
Bis-(2-ethylhexyl) Phthalate (DEHP)	mg/kg	1000	/	N.D.	N.D.	N.D.	/	/
Benzylbutyl Phthalate (BBP)	mg/kg	1000	/	N.D.	N.D.	N.D.	/	/
Dibutyl Phthalate (DBP)	mg/kg	1000	/	N.D.	N.D.	N.D.	/	/

## Sample Description:

- 1: Black shell
- 2: Black bottom
- 3: Glass
- 4: Wire rod
- 5: Screw
- 6: Black bracket

Testing Item	Unit	ROHS Limit	Result					
			7	8	9	10	11	12
Lead(Pb)	mg/kg	1000	N.D.	N.D.	N.D.	N.D.	N.D.	N.D.
Cadmium(Cd)	mg/kg	100	N.D.	N.D.	N.D.	N.D.	N.D.	N.D.
Mercury(Hg)	mg/kg	1000	N.D.	N.D.	N.D.	N.D.	N.D.	N.D.
Chromium(Cr VI)	mg/kg	1000	N.D.	N.D.	N.D.	N.D.	N.D.	N.D.
Sum of PBBs	mg/kg	1000	N.D.	N.D.	N.D.	N.D.	N.D.	N.D.
Monobromobiphenyl	mg/kg	-	N.D.	N.D.	N.D.	N.D.	N.D.	N.D.
Dibromobiphenyl	mg/kg	-	N.D.	N.D.	N.D.	N.D.	N.D.	N.D.
Tribromobiphenyl	mg/kg	-	N.D.	N.D.	N.D.	N.D.	N.D.	N.D.
Tetrabromobiphenyl	mg/kg	-	N.D.	N.D.	N.D.	N.D.	N.D.	N.D.
Pentabromobiphenyl	mg/kg	-	N.D.	N.D.	N.D.	N.D.	N.D.	N.D.
Hexabromobiphenyl	mg/kg	-	N.D.	N.D.	N.D.	N.D.	N.D.	N.D.
Heptabromobiphenyl	mg/kg	-	N.D.	N.D.	N.D.	N.D.	N.D.	N.D.
Octabromobiphenyl	mg/kg	-	N.D.	N.D.	N.D.	N.D.	N.D.	N.D.
Nonabromobiphenyl	mg/kg	-	N.D.	N.D.	N.D.	N.D.	N.D.	N.D.
Decabromobiphenyl	mg/kg	-	N.D.	N.D.	N.D.	N.D.	N.D.	N.D.
Sum of PBDEs	mg/kg	1000	N.D.	N.D.	N.D.	N.D.	N.D.	N.D.
Monobromodiphenyl ether	mg/kg	-	N.D.	N.D.	N.D.	N.D.	N.D.	N.D.
Dibromodiphenyl ether	mg/kg	-	N.D.	N.D.	N.D.	N.D.	N.D.	N.D.
Tribromodiphenyl ether	mg/kg	-	N.D.	N.D.	N.D.	N.D.	N.D.	N.D.
Tetrabromodiphenyl ether	mg/kg	-	N.D.	N.D.	N.D.	N.D.	N.D.	N.D.
Pentabromodiphenyl ether	mg/kg	-	N.D.	N.D.	N.D.	N.D.	N.D.	N.D.
Hexabromodiphenyl ether	mg/kg	-	N.D.	N.D.	N.D.	N.D.	N.D.	N.D.
Heptabromodiphenyl ether	mg/kg	-	N.D.	N.D.	N.D.	N.D.	N.D.	N.D.
Octabromodiphenyl ether	mg/kg	-	N.D.	N.D.	N.D.	N.D.	N.D.	N.D.
Nonabromodiphenyl ether	mg/kg	-	N.D.	N.D.	N.D.	N.D.	N.D.	N.D.
Decabromodiphenyl ether	mg/kg	-	N.D.	N.D.	N.D.	N.D.	N.D.	N.D.
Diisobutyl phthalate (DIBP)	mg/kg	1000	N.D.	N.D.	N.D.	N.D.	N.D.	N.D.
Bis-(2-ethylhexyl) Phthalate (DEHP)	mg/kg	1000	N.D.	N.D.	N.D.	N.D.	N.D.	N.D.
Benzylbutyl Phthalate (BBP)	mg/kg	1000	N.D.	N.D.	N.D.	N.D.	N.D.	N.D.
Dibutyl Phthalate (DBP)	mg/kg	1000	N.D.	N.D.	N.D.	N.D.	N.D.	N.D.

Sample Description:

7: Blue part

8: White part

9: Plastic plat

10: PCB board

11: Drive

12: Blue plug-in

## Notes:

1mg/kg=1ppm = 0.0001%

N.D. = Not Detected (<MDL)

MDL = Method Detection Limit

/=Not Regulated

## Breakdown of product



Photo 1



Photo 2



Photo 3

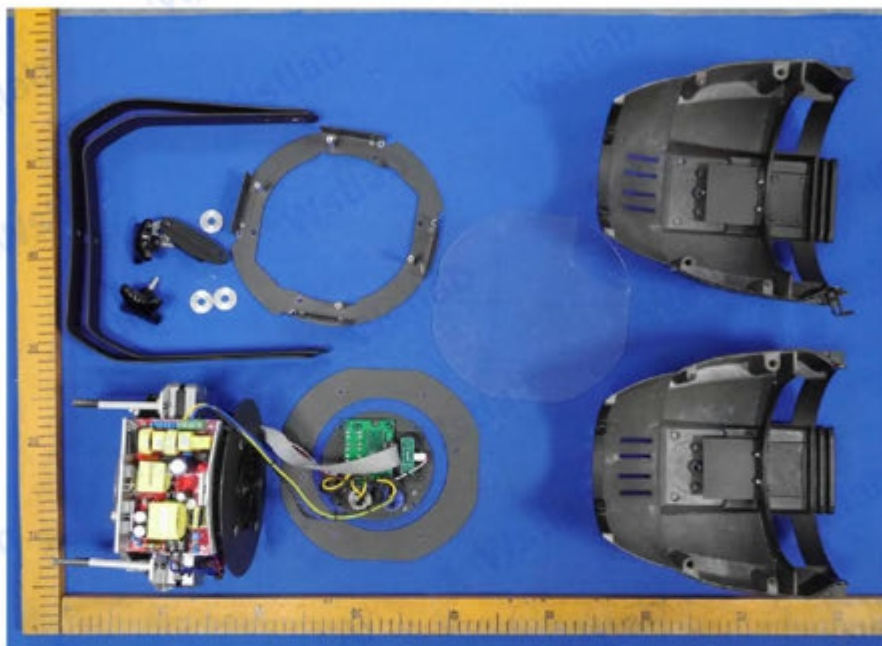


Photo 4

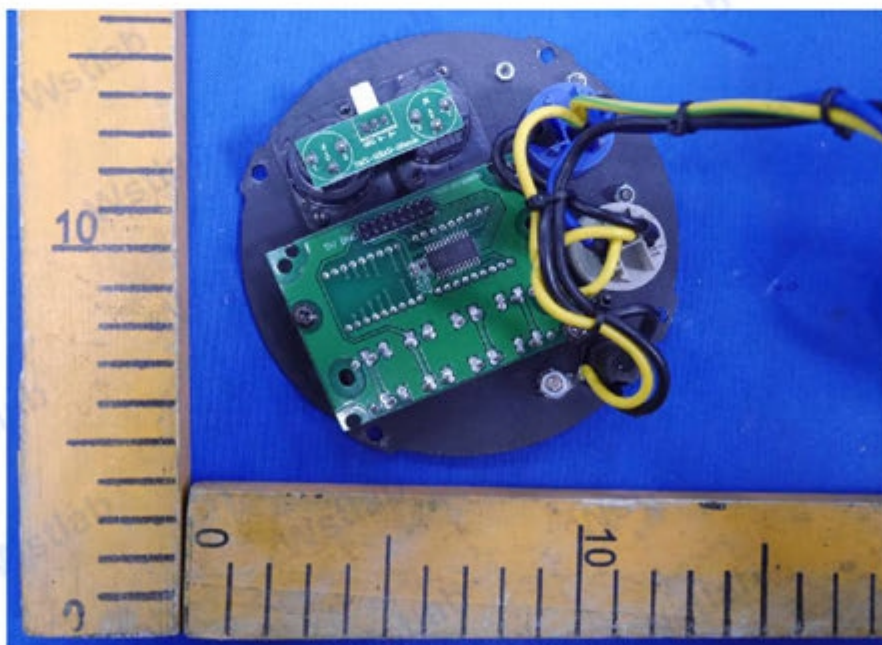




Photo 5

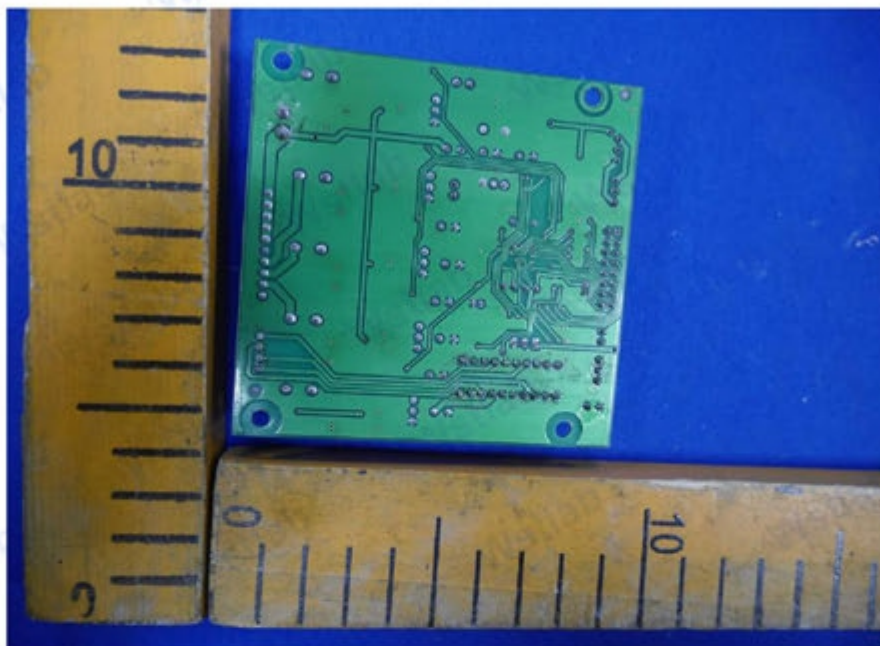


Photo 6

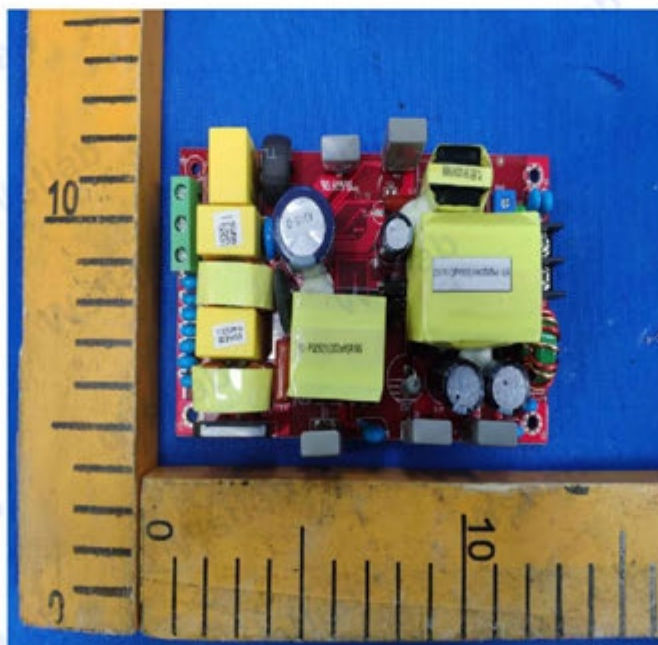
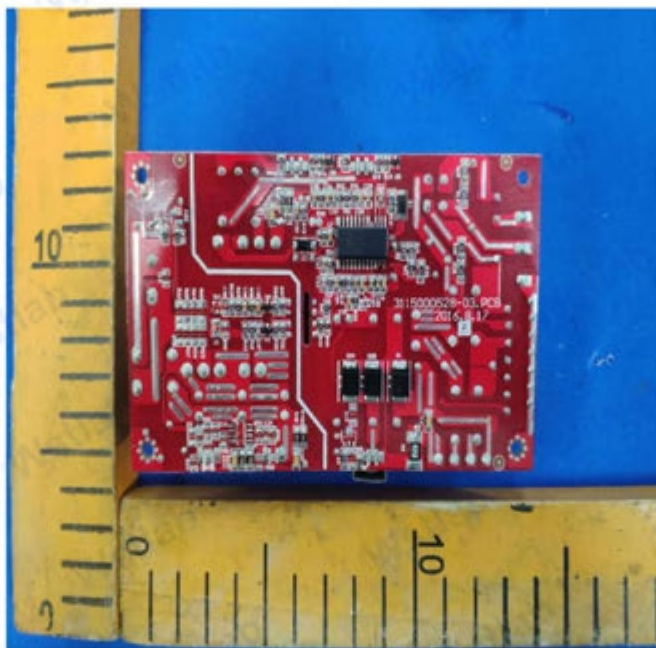


Photo 7



-----End of report -----